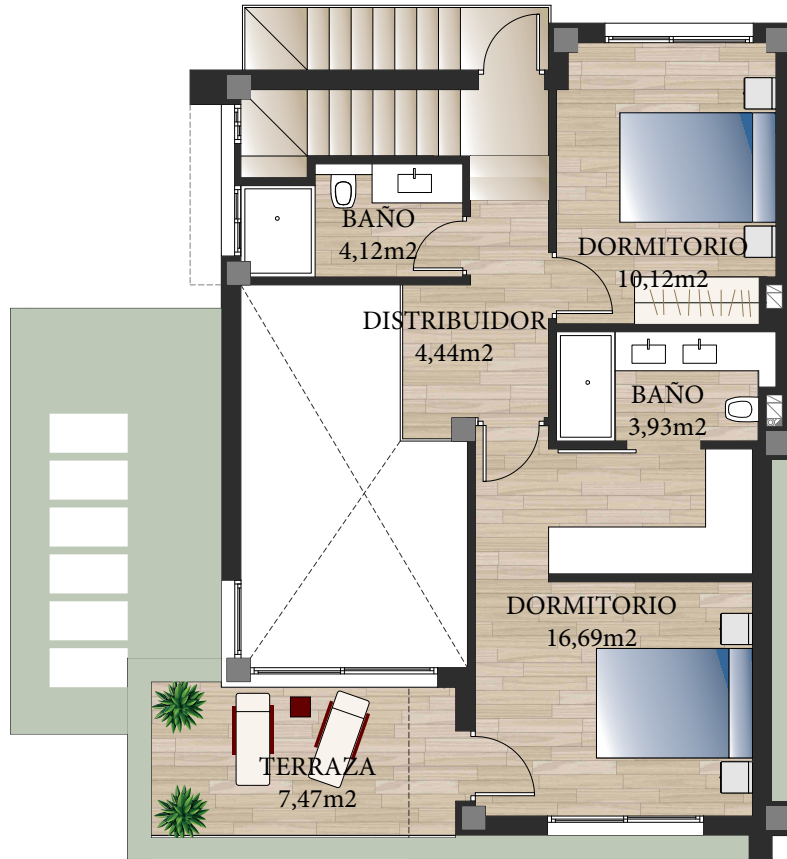
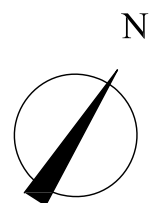


RESIDENCIAL "SOL NATURA"

PLANTA ALTA



| <u>PLANTA ALTA</u> | |
|--------------------|-----------|
| VIVIENDA | 52,32 m2. |
| TERRAZA | 7,47 m2. |



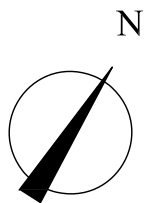
9 VIVIENDAS UNIFAMILIARES CON PISCINA
CALLE OVIEDO. ATALAYA PARK. BENIJÓFAR

RESIDENCIAL "SOL NATURA"

PLANTA BAJA



| PLANTA BAJA | |
|---------------------|-----------|
| VIVIENDA | 65,15 m². |
| PORCHE CUBIERTO | 17,58 m². |
| GALERÍA | 3,08 m². |
| TERRAZA DESCUBIERTA | 40,00 m². |
| PATIO SERVICIO | 10,00 m². |
| JARDÍN | 90,00 m². |
| PISCINA | 21,00 m². |
| SUP. APROX. PARCELA | 267 m². |

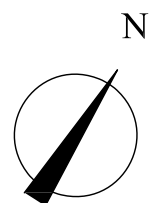


RESIDENCIAL "SOL NATURA"

SOLÁRIUM



| <u>SOLÁRIUM</u> | |
|-----------------|-----------|
| TERRAZA | 60,48 m2. |



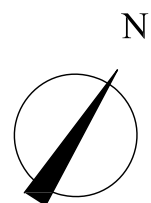
9 VIVIENDAS UNIFAMILIARES CON PISCINA
CALLE OVIEDO. ATALAYA PARK. BENIJÓFAR

RESIDENCIAL "SOL NATURA"

SÓTANO



| <u>SÓTANO</u> | |
|---------------|------------|
| VIVIENDA | 112,40 m2. |
| PATIO | 30 m2. |



9 VIVIENDAS UNIFAMILIARES CON PISCINA
CALLE OVIEDO. ATALAYA PARK. BENIJÓFAR

RESIDENCIAL "SOL NATURA"

