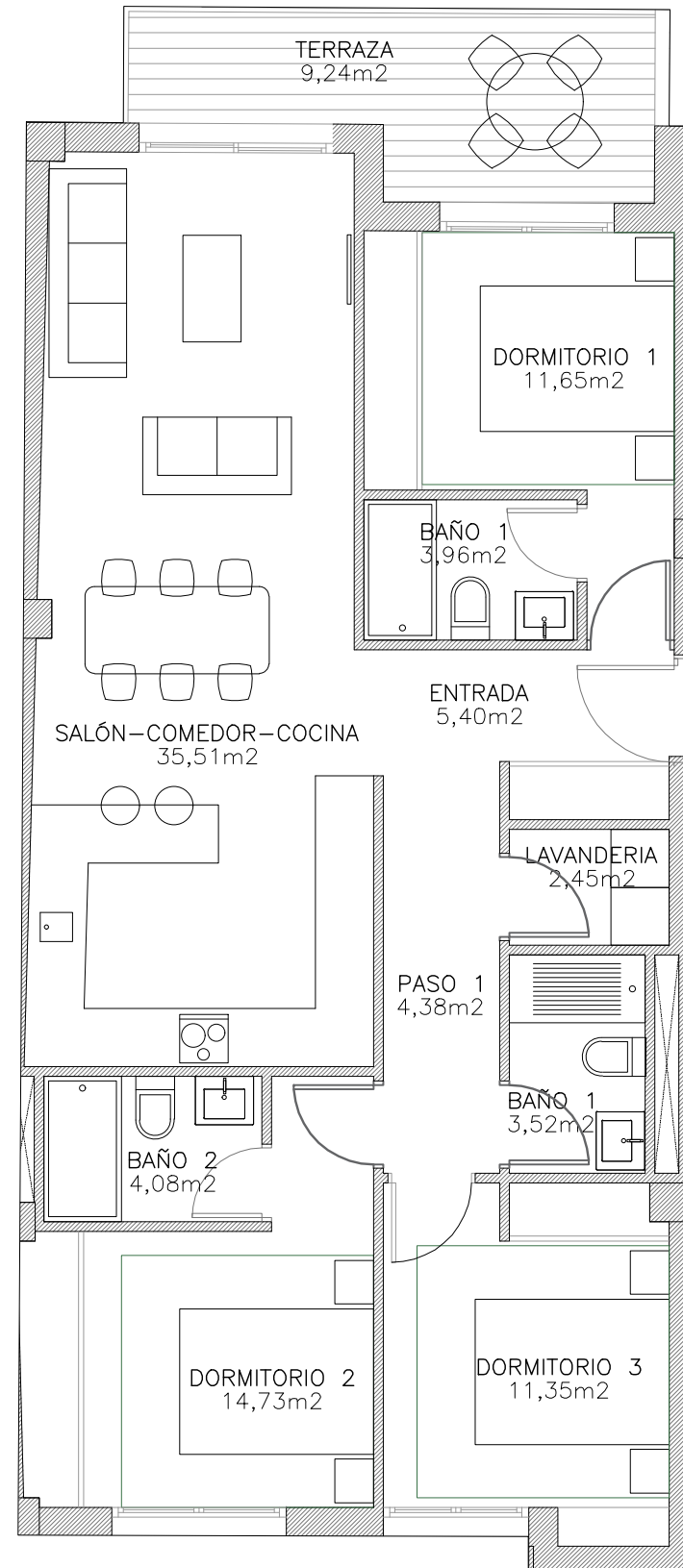


Edificio M I R A M A R

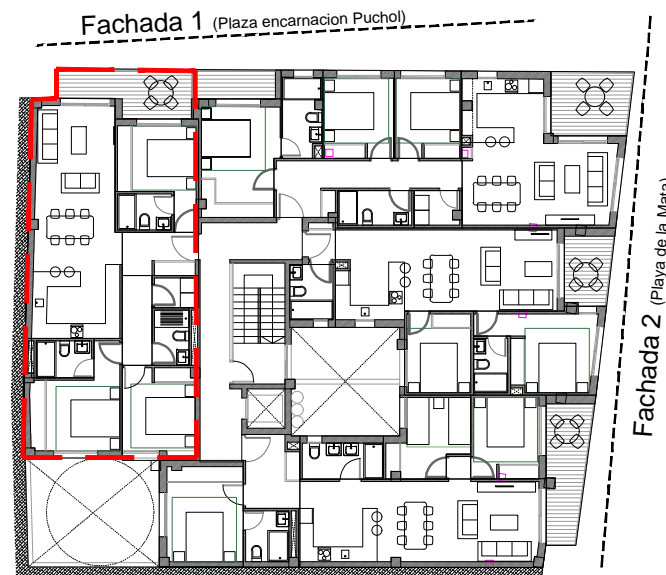
apartamento tipo **A** E:1/75



Edificio MIRAMAR APARTAMENTO Tipo A

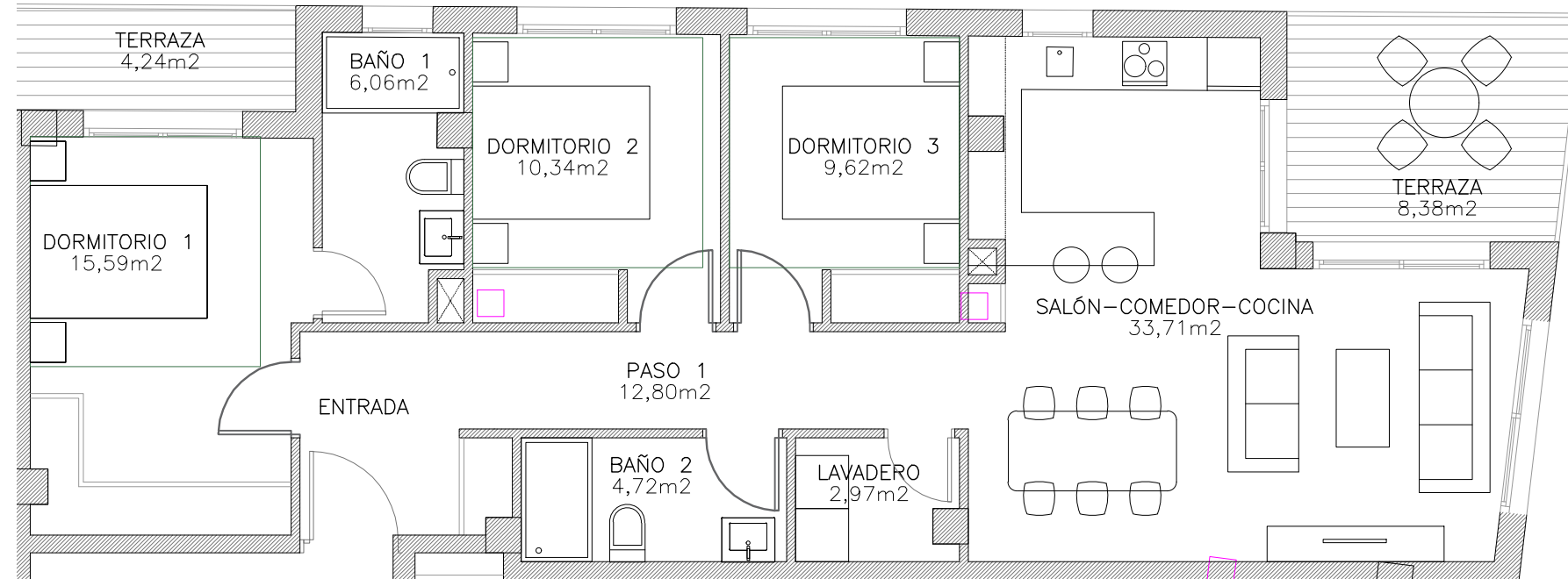
Superficies

TOTAL SUP. 106,27 m²



Edificio M I R A M A R

apartamento tipo **B** E:1/75



Edificio M I R A M A R

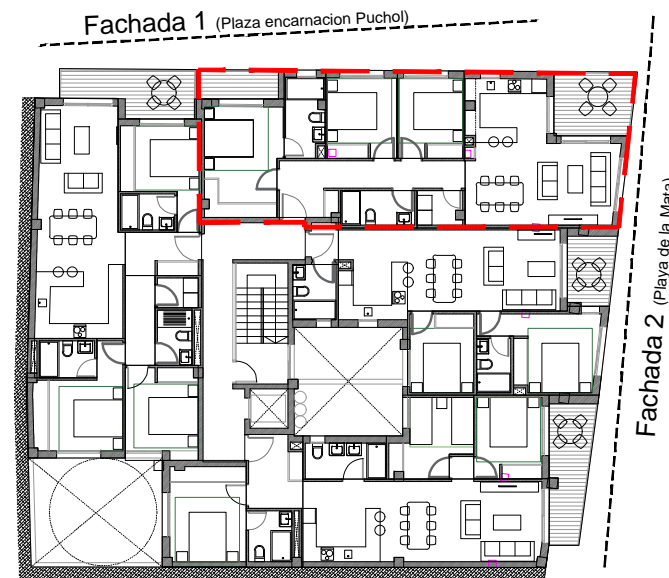
APARTAMENTO

Tipo **B**

Superficies

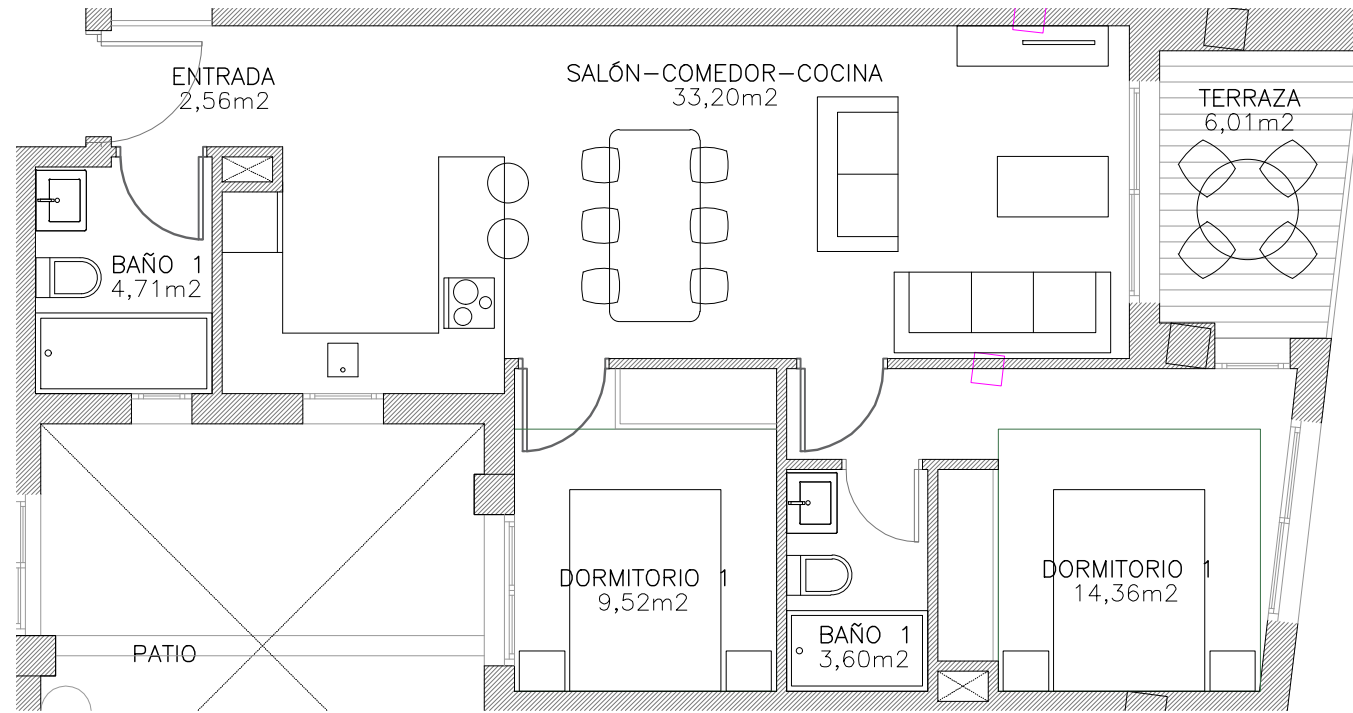
TOTAL SUP.

108,43 m²



Edificio M I R A M A R

apartamento tipo **C** E:1/75



Edificio M I R A M A R

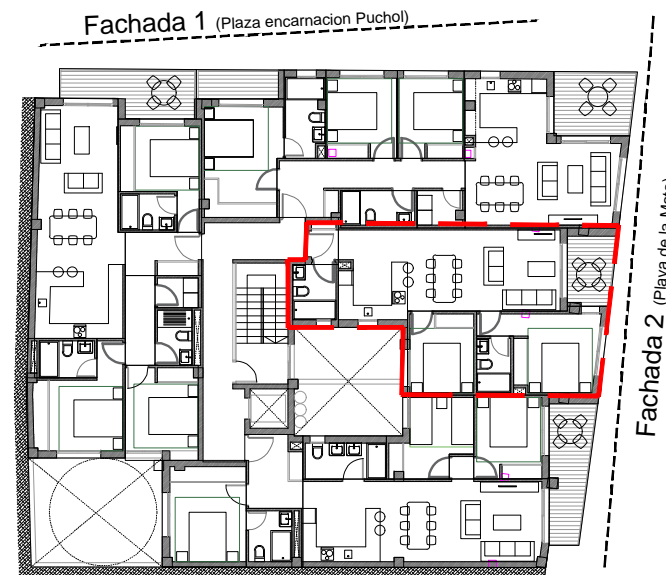
APARTAMENTO

Tipo **C**

Superficies

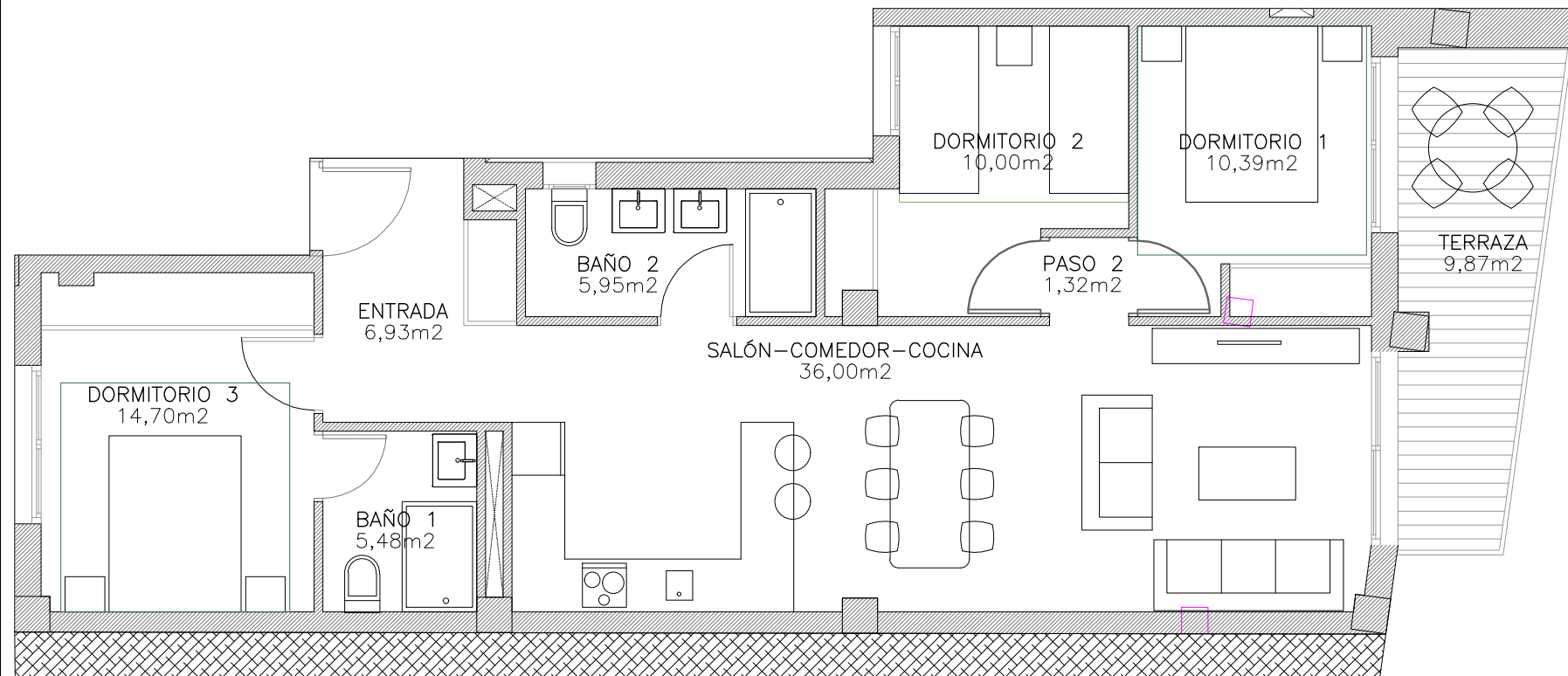
TOTAL SUP.

73,96 m²



Edificio M I R A M A R

apartamento tipo **D** E:1/75



Edificio M I R A M A R

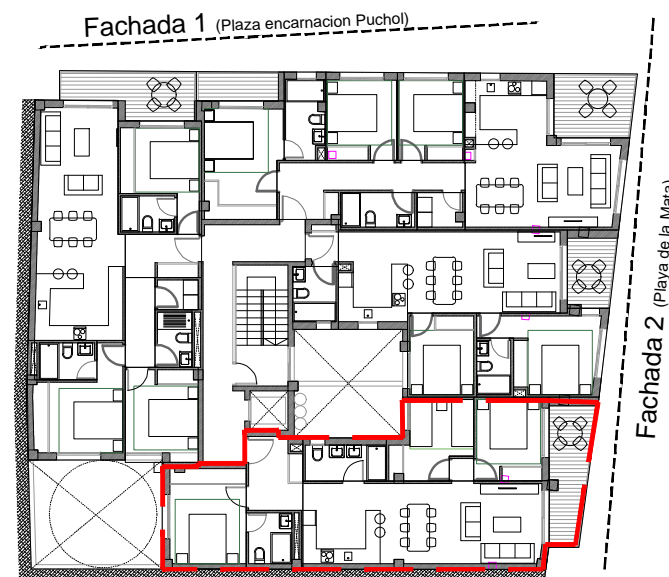
APARTAMENTO

Tipo **D**

Superficies

TOTAL SUP.

100,64 m²



Edificio M I R A M A R

ático opción 1
vivienda tipo **E**

E:1/75

Edificio M I R A M A R

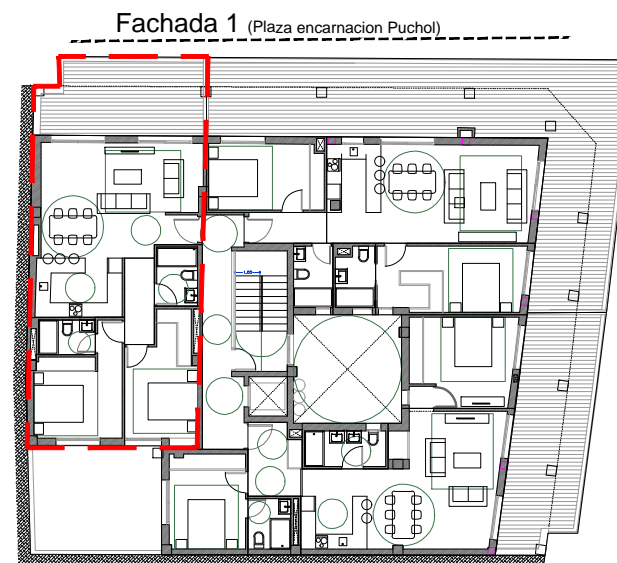
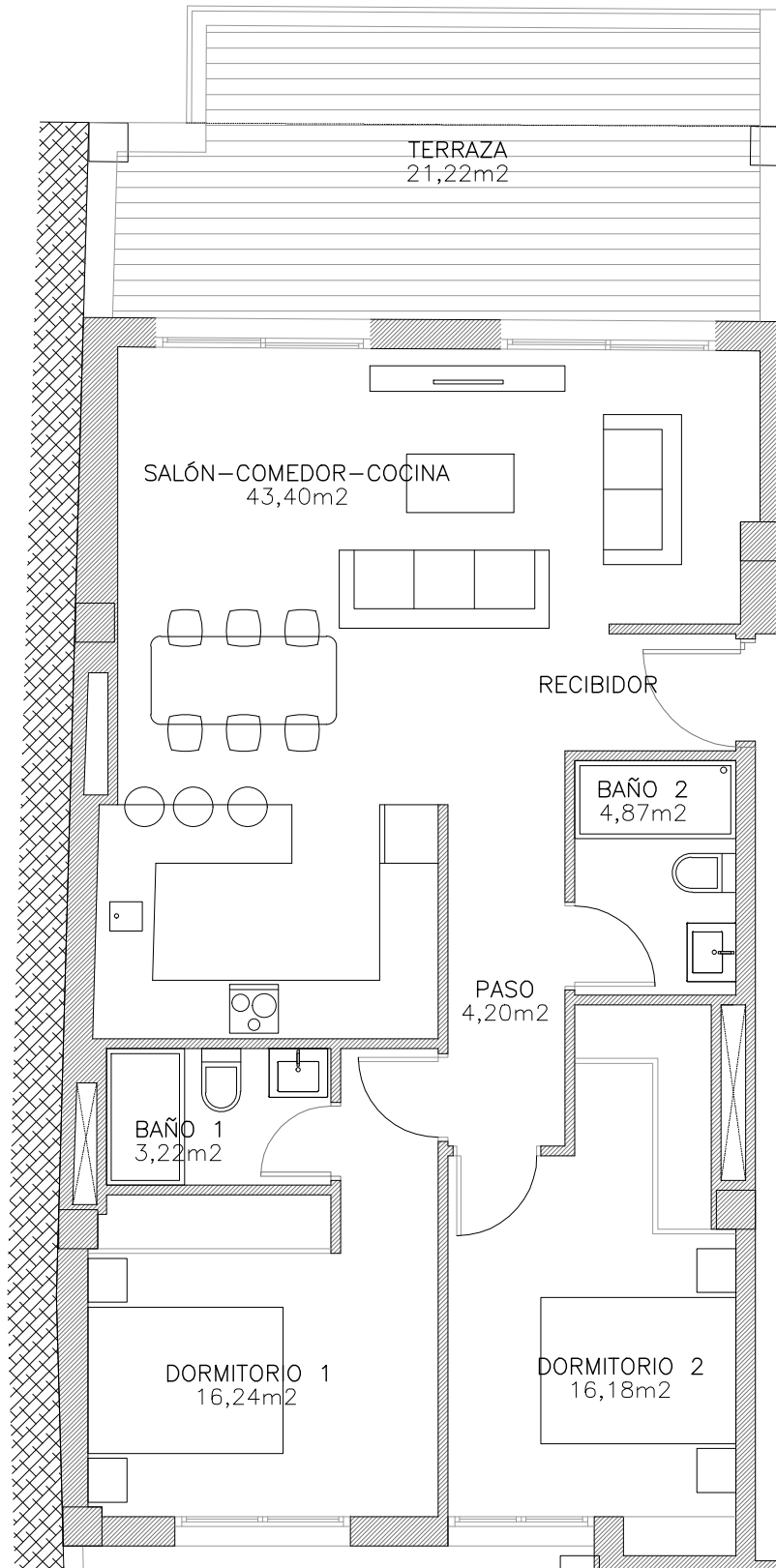
ATICO OPCION 1

Tipo **E**

Superficies

TOTAL SUP.

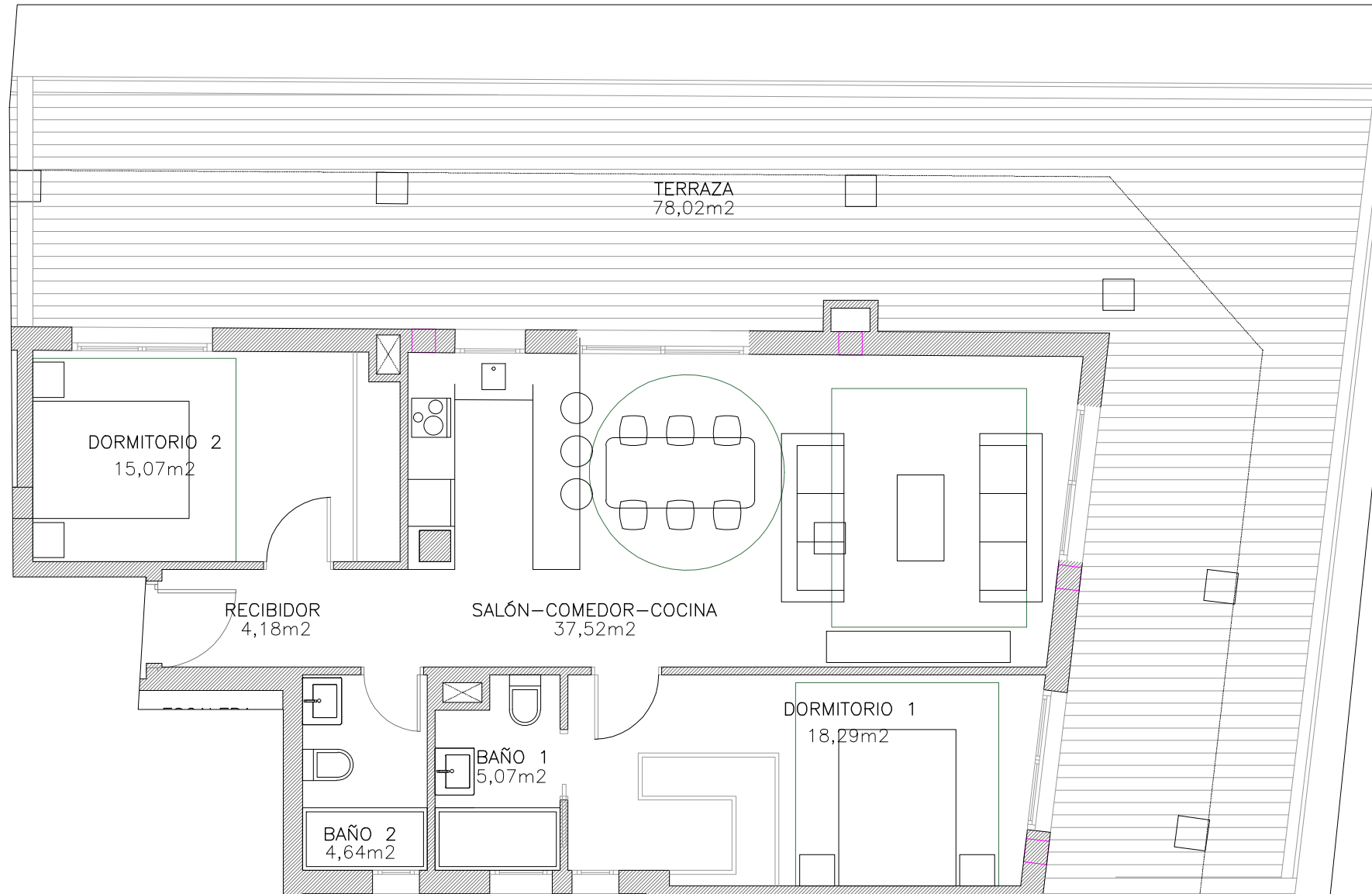
109,33 m²



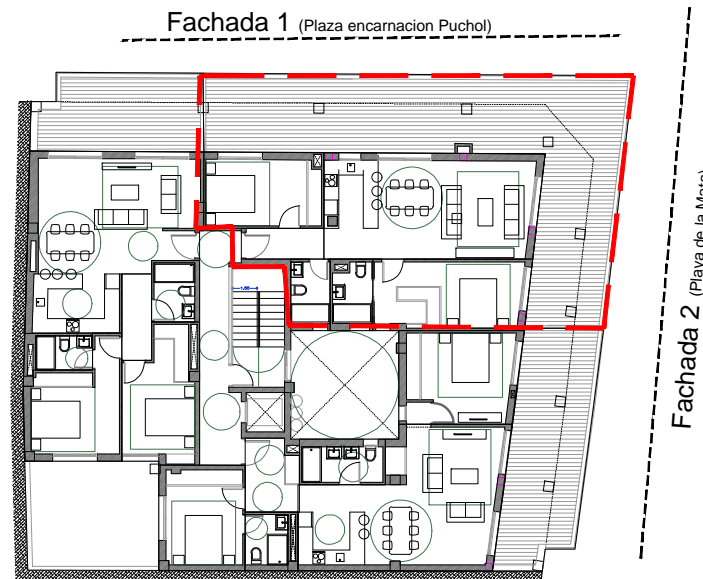
Edificio M I R A M A R

ático opción 1
vivienda tipo **F**

E:1/75



Fachada 1 (Plaza encarnacion Puchol)



Edificio M I R A M A R

ATICO OPCION 1

Tipo **F**

Superficies

TOTAL SUP.

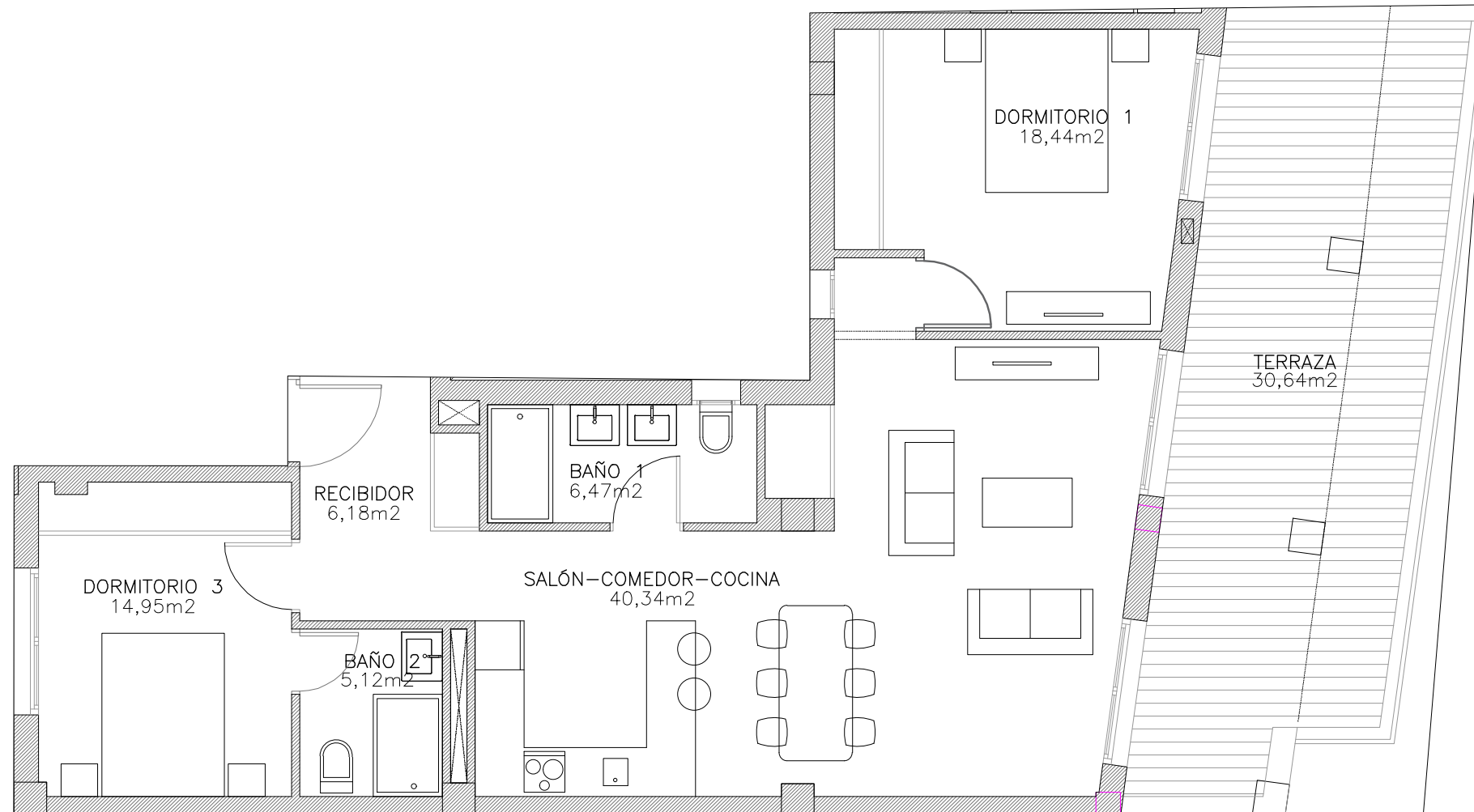
162,79 m²



Edificio M I R A M A R

ático opción 2
vivienda tipo **G**

E:1/75



Edificio M I R A M A R

ATICO OPCION 1

Tipo **G**

Superficies

TOTAL SUP.

120,54 m²

